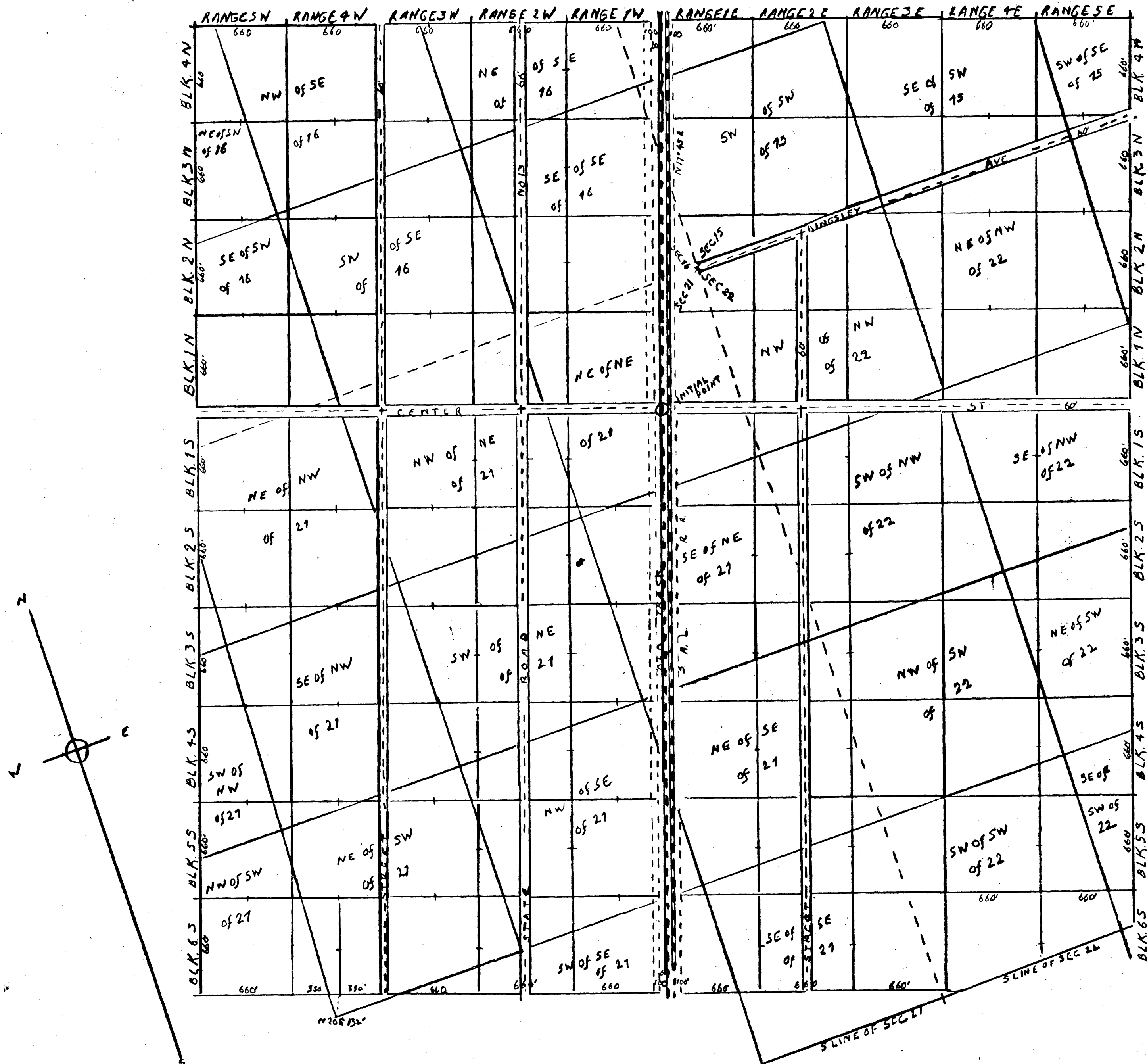


# SIMON J. TEMPLE'S SUBDIVISION

IN SECTIONS 15, 16, 21, 22, TP. 6 S., R. 22 E., BRADFORD COUNTY, FLORIDA



SCALE, 500 FT. TO INCH

Temple's Subdivision was planned in 1888 by Wm. Lake, and stakes were set when land sales required them. The initial point was a monument set in the railway track, the lines run parallel and at right angles with the track. The blocks 660 x 660 feet the streets cut from the abutting blocks. The system was good and convenient. But the fact was overlooked that already lands in the territory had been sold as fractions of "forties" according to the government survey, furthermore, about 1890, through a sheriff's sale, Truby, Sternburg & Co. acquired all the lands in the Subdivision still owned by S. J. Temple. These lands were described, and later surveyed, according to government notation. The two survey systems in the same territory have been a source of much trouble to surveyors, tax assessors and title abstractors and deeds to lands in the territory frequently show incongruous descriptions. Subdivision corner stakes have been mistaken for "forty" corners and vice versa. There are overlaps and gores, and spots that cannot be legally claimed by anybody. The government subdivision lines were not marked on the original plat of Temple's Subdivision. As the "forty" or "forties" in which a lot is situated, must be given in its description, I have marked the respective "forties" on this plat, their location being based upon known lines and corners. The monument marking the initial point for surveys in the Subdivision was destroyed long ago. As no monument set in the track can long remain, I get the initial point thus: Go to the east track (put down in 1916), a little to the north of the center of Center Street from the joint in the west line of rails measure 20 inches to the south—which lacks a few inches in reaching the north edge of the plat—ing of the R.R. crossing, as at present laid down, then turn a right angle to the west, to the center of the west (the old) track, and there is the initial point. In the southwestern portion of the Subdivision, go to the southwest corner of the NE of the SW of Sec 21, marked with an iron stake and run N20E, 132 ft., to southwest corner of Block 65, of Range 4W.

H. E. Lagergren,  
March, 1928.