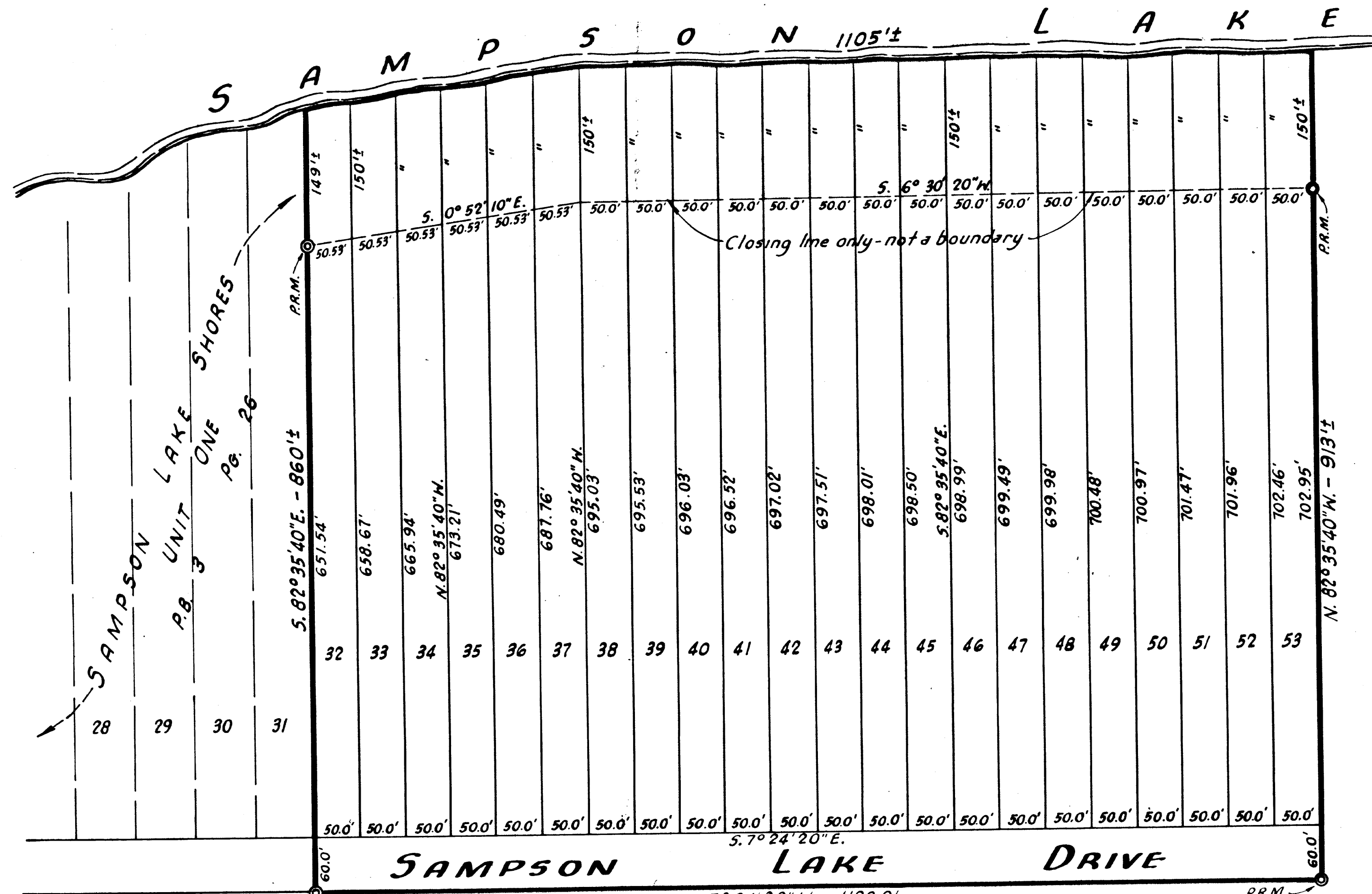
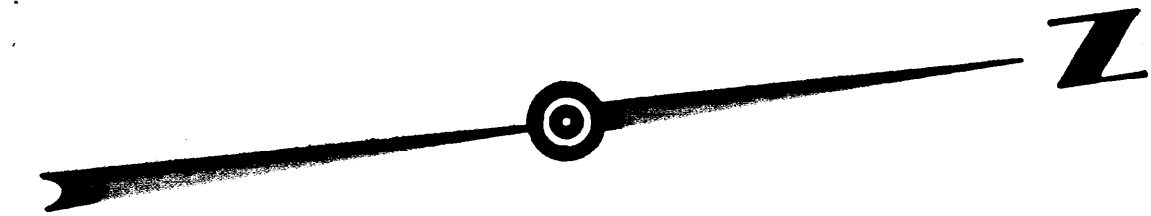


SAMPSON LAKE SHORES UNIT TWO

BRADFORD COUNTY, FLORIDA
 A SUBDIVISION OF A PORTION OF SECTION 35, TWP. 6-S., RGE. 21-E., BEING
 MORE PARTICULARLY DESCRIBED IN THE CAPTION.

CAPTION:

Commence at a permanent reference monument (hereinafter referred to as P.R.M.) located at the North-east corner of Sampson Lake Shores Unit One as recorded in Platbook 3 page 26 of the public records of said County for the point of beginning; run thence N. 7° 24' 20" E. along a prolongation of the Easterly boundary of said Sampson Lake Shores Unit One, 1100.0 feet to a P.R.M.; run thence N. 82° 35' 40" W., 913 feet more or less to the waters edge of Sampson Lake, run thence Southerly along said waters edge, 1105 feet more or less to the North West corner of aforesaid Sampson Lake Shores Unit One, run thence S. 82° 35' 40" E. along the Northerly boundary thereof, 860 feet more or less to point of beginning.



ADOPTION AND DEDICATION

This is to certify that the undersigned is the lawful owner of the land described in the caption hereon, that he has caused the same to be surveyed and subdivided, and that this plat, made in accordance with said Survey is hereby adopted as the true and correct plat of said lands, and all Drives shown upon said plat are hereby irrevocably and without reservation dedicated to Bradford County, Florida.

In witness whereof these presents are signed this 28 day of April A.D. 1966

Jayce B. Hutcherson Witness
Betty S. Matthews Witness
Eoline W. Smith Seal
 Eoline W. Smith (single)

**STATE OF FLORIDA
 COUNTY OF BRADFORD**

I hereby certify that on this day personally appeared before me, an officer duly authorized to administer oaths and take acknowledgements, Eoline W. Smith, single, to me well known to be the person described in and who executed the foregoing dedication and who severally acknowledged before me that they executed the same freely and voluntarily for the purposes therein expressed. Witness my signature and official seal at Starke, in the County of Bradford and State of Florida this 28 day of April A.D. 1966.

Jayce B. Hutcherson
 Notary Public State of Florida at large
 My Commission Expires: Nov. 16, 1969

APPROVED FOR RECORD

This is to certify that this plat has been examined and is hereby accepted and approved by the Board of County Commissioners of Bradford County, Florida.
 Signed this 5 day of July A.D. 1966.

BOARD OF COUNTY COMMISSIONERS

Charles A. Daryl Clerk
Jerome Johns Chairman

CLERKS CERTIFICATE

I hereby certify that this plat has been examined and that it complies in form with Chapter 10275, laws of the State of Florida of 1925, and is filed for record and recorded in Platbook 3 Page 28 of the public records of Bradford County, Florida, this 5 day of July A.D. 1966.

Charles A. Daryl Clerk
 Deputy Clerk

SURVEYORS CERTIFICATE

This is to certify that the above Plat is a correct representation of the lands Surveyed and Platted and described above, that Permanent Reference Monuments have been placed according to the Laws of Florida.
 Signed this 28 day of April A.D. 1966.

"NOTES"

Permanent Reference Monuments shown thus: P.R.M. — ⊙

M. G. McMILLAN

REGISTERED SURVEYOR

STARKE, FLORIDA

M. G. McMillan
 Registered Surveyor Certificate No. 391

