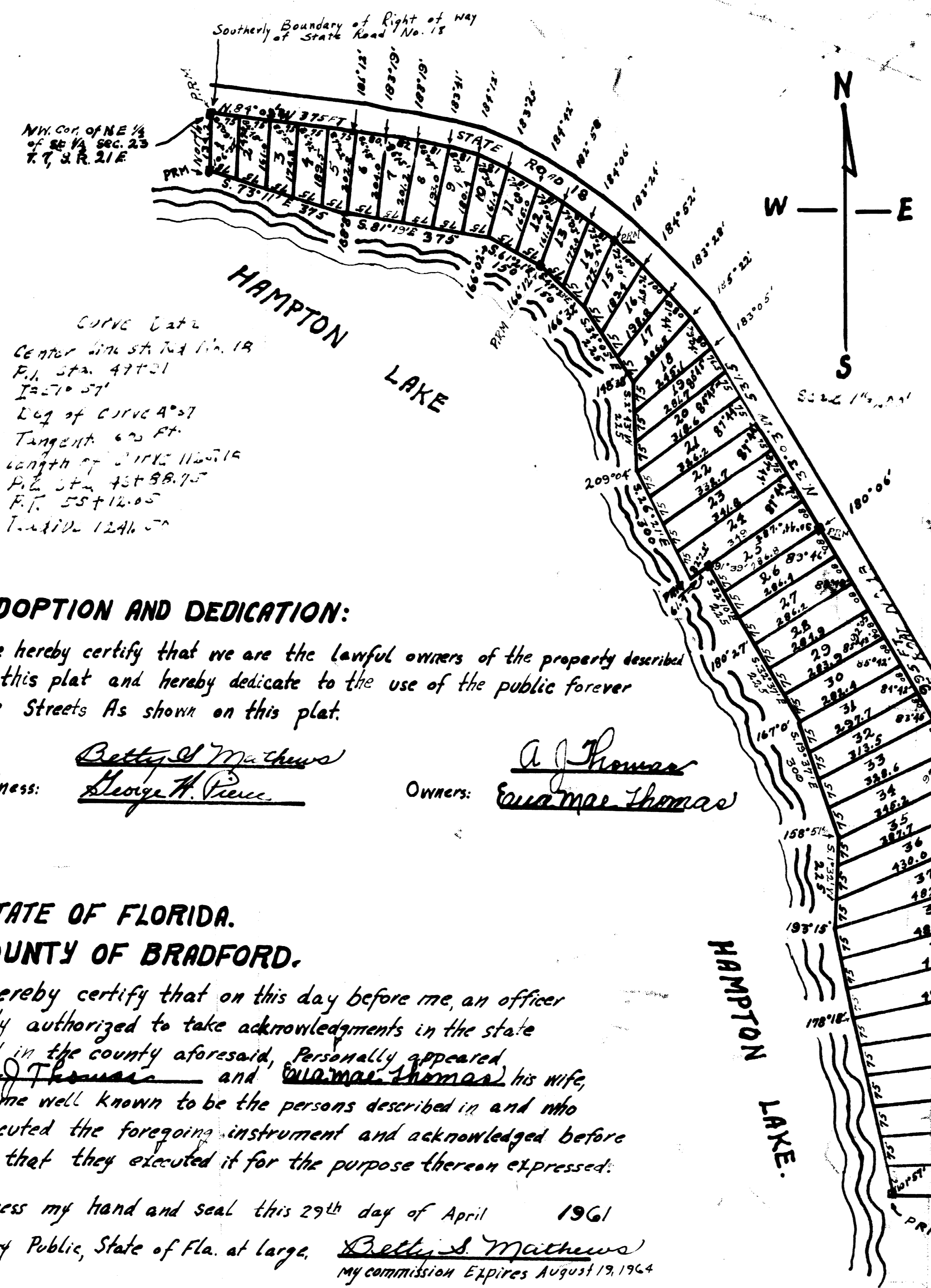


# NEW HAMPTON BEACH

A SUBDIVISION IN BRADFORD CO. FLA.

A subdivision of parts of the West 1/2 of the SW 1/4 of Section 24 and the NE 1/4 of the SE 1/4 of Section 23 Township 7 South Range 21 East. more particularly described as; Commence at the SE corner of the West half of the SW 1/4 of Section 24 Township 7, South Range 21 East; Thence West 281 ft. to the P.O.B. Thence continue West 558 ft. to the waters edge of Hampton Lake. Thence, from the P.O.B. go N. 16° 58' W. 584.5 ft. Thence, N. 17° 05' W. 270 ft. Thence, N. 32° 57' W 995 ft. Thence N. 33° 03' W. 531.5 ft. Thence, through the following outside angles and distances, 183° 05' 80 ft. 185° 21' 80 ft. 183° 28' 100 ft. 181° 52' 100 ft. 183° 24' 81 ft. 184° 06' 81 ft. 182° 58' 81 ft. 184° 42' 81 ft. 183° 26' 81 ft. 189° 12' 81 ft. 183° 41' 81 ft. 183° 19' 82 ft. 183° 19' 80 ft. 181° 12' to the bearing N. 84° 09' W. continue on this bearing 375 ft. to the N.W. corner of the NE 1/4 of the SE 1/4 of Section 23 Township 7, South Range 21 East. Thence, South 131.2 ft. ± to the waters edge of Hampton Lake. Thence, Southerly and Easterly along the waters edge to intersect the first line from the P.O.B.

Also, a strip of land 66 ft wide lying North of and East of and adjacent to the above described property property to be used as a road.



CURVE DATA  
 Center 576.57 Rad. in. 19  
 P.I. Sta. 47+01  
 I=70° 57'  
 Leg of CURVE 4° 57'  
 Tangent 625 FT.  
 Length of CURVE 1120.15  
 P.E. Sta. 43+98.75  
 P.T. 55+12.05  
 L=1102.1246 57'

### ADOPTION AND DEDICATION:

We hereby certify that we are the lawful owners of the property described in this plat and hereby dedicate to the use of the public forever the Streets As shown on this plat.

Witness: Betty S. Mathews  
George H. Pierce  
 Owners: A. Thomas  
Eunam Thomas

### STATE OF FLORIDA. COUNTY OF BRADFORD.

I hereby certify that on this day before me, an officer duly authorized to take acknowledgments in the state and in the county aforesaid, Personally appeared A. Thomas and Eunam Thomas his wife, to me well known to be the persons described in and who executed the foregoing instrument and acknowledged before me that they executed it for the purpose thereon expressed:

Witness my hand and seal this 29th day of April 1961  
 Notary Public, State of Fla. at large, Betty S. Mathews  
 My commission Expires August 19, 1964

This is to certify that the accompanying plat is a true and correct representation of the land surveyed and platted hereon and that P.R.M's have been established at points so marked. Survey checked and found correct this date 4-30-61  
Roy L. Watkins  
 Fla. Certificate No. 970

I hereby certify that this plat has been examined and that it complies in form with chapter No. 10275. laws of the State of Florida of 1925 and is filed for record in Bradford Co. Fla. this 15th day of JULY 1961  
Charles A. Davis  
 Clerk

Plat Book 3, Page 21

Examined and approved this 2ND day of MAY 1961 by the Board of County Commissioners of Bradford County, Florida

Carl Priddy  
 Chairman of the Board of County Commissioners Bradford Co. Fla.

FOR RESTRICTIONS ON USE OF THE PROPERTY DESCRIBED HEREON SEE O.R. BOOK 20 PAGE