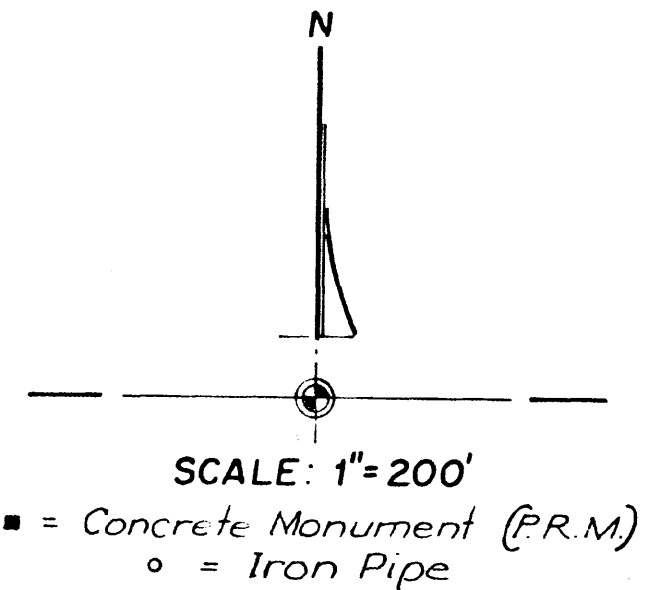


M.F. WIGGINS SUBDIVISION

IN
 SEC. 7 - T.6 S. - R.21 E. & SEC. 12 - T.6 S. - R.20 E.
 BRADFORD COUNTY, FLORIDA



Legal Description:
 The S.W. 1/4 of the S.W. 1/4 of Sec. 7 - T.6 S. - R.21 E. and the S.E. 1/4 of the S.E. 1/4 of Sec. 12 - T.6 S. - R.20 E., Bradford County, Florida.

COUNTY SURVEYOR AND/OR ENGINEER APPROVAL:

Approved M. J. Marshall Date: July 3, 1972
 County Surveyor and/or County Engineer.

COUNTY ATTORNEY APPROVAL:

Approved as to wording of dedication and certification for Bradford County, Florida
 Signed this 3rd day of July, 1972
Eugene Shaw
 County Attorney

ADOPTION & DEDICATION:

This is to certify that the undersigned are the lawful owners of the land described in the caption hereon, that they have caused the same to be surveyed and subdivided and that this plat made in accordance with said survey is hereby adopted as the true and correct plat of said lands and all streets and easements shown on said plat are hereby dedicated without reservation to Bradford County, Florida.

In witness whereof these presents are signed this 11th day of May, 1972.

George W. Phillips, Witness M.F. Wiggins, Seal
Ronald F. ..., Witness Mama L. Wiggins, Seal

STATE OF FLORIDA
 COUNTY OF BRADFORD

I hereby certify that on this day personally appeared before me, an officer duly authorized to administer oaths and take acknowledgements, M.F. Wiggins and Mama L. Wiggins, his wife, to me well known and known to be the persons described in and who executed the foregoing and who severally acknowledged before me that they executed the same freely and voluntarily for the purposes therein expressed.

Witness my signature and official seal this 11th day of May, A.D. 1972.

Ronald G. ..., Notary Public
 My commission expires Oct. 9, 1975

SURVEYORS CERTIFICATE:

This is to certify that this plat is a correct and true representation of the lands surveyed and platted and described herein and that permanent reference monuments have been set as shown, according to Section 7, Chapter 10275 of the Laws of Florida.

Signed this _____ day of _____, 1972

Ray C. McMillan, Surveyor
 Reg. Fla. Cert. No. 509

BRADFORD COUNTY ZONING APPROVAL:

I hereby certify that this plat conforms to the minimum requirements as set forth in the Bradford County Zoning Regulations.

Signed this 11 day of July, 1972

John A. ..., Chairman
 Bradford County Zoning Board

BOARD OF COUNTY COMMISSIONERS APPROVAL:

I hereby certify that this plat has been examined and is hereby accepted and approved by the Board of County Commissioners of Bradford County, Florida.

Signed this 3rd day of July, 1972

George W. Roberts, Chairman
 Board of County Commissioners

HEALTH DEPARTMENT:

The Bradford County Health Department will examine and consider each lot separately as shown on this plat when building permits are applied for.

Signed this 3rd day of July, 1972

Bradford County Health Dept.

CLERKS CERTIFICATE:

I hereby certify that this plat has been examined and that it complies in form with Chapter 10275, Laws of the State of Florida of 1925, and is filed for record and recorded in Plat Book Page _____ of the public records of Bradford County, Florida.

Signed this 3 day of July, 1972

Silent ..., Clerk

