

Mount Pleasant  
ON  
Silver Lake



I do hereby certify that  
9m the lower part of  
of the land described here  
on and do hereby dedicate  
to the use of the public  
forever the streets as  
shown on this plat

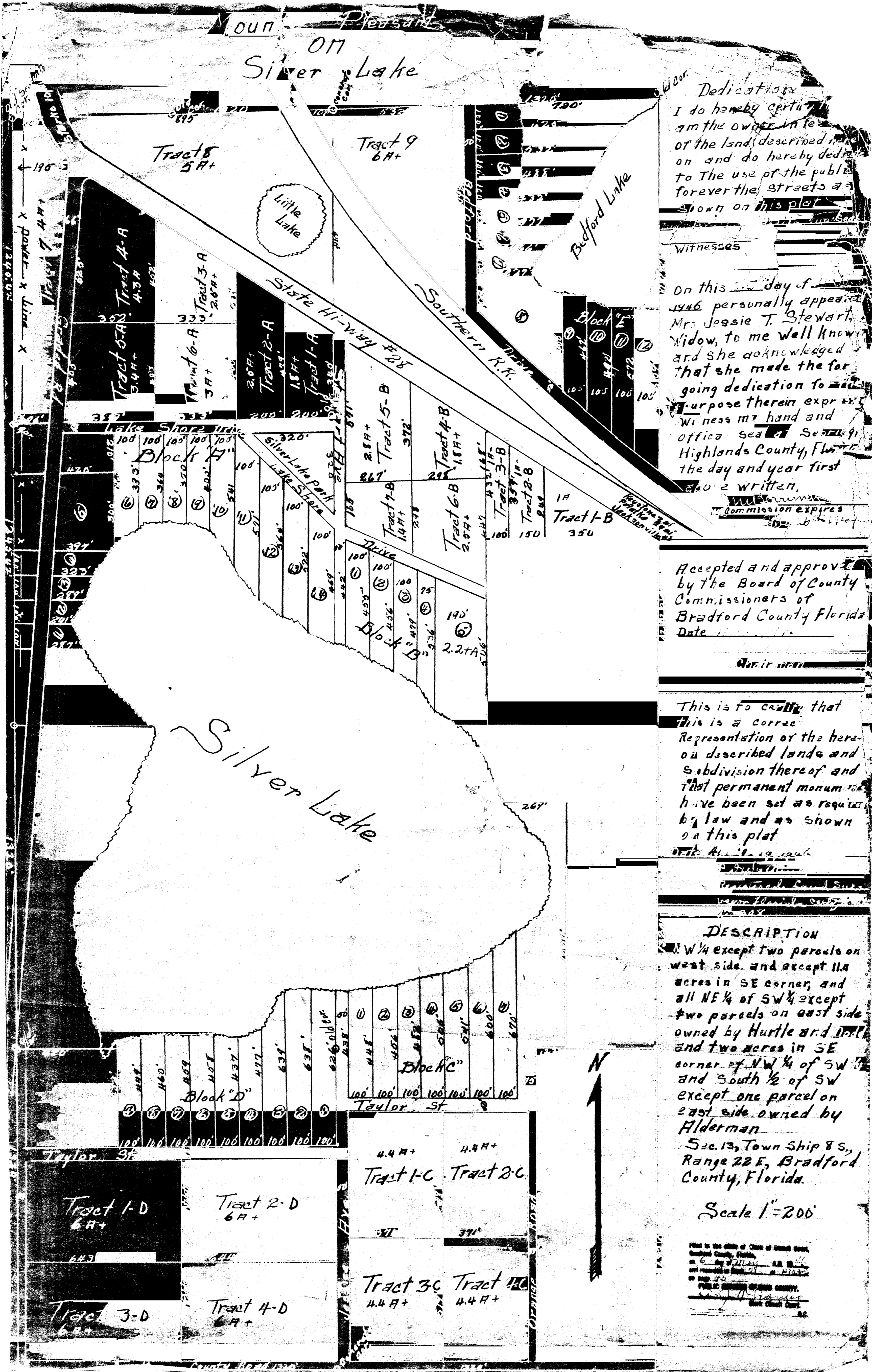
Witnesses  
On this 14th day of  
1946 personal appeared  
Mrs. Jossie T. Stewart  
widow, to me well knowing  
and she does acknowledge  
that she made the fore-  
going dedication for the  
purpose therein expressed  
Witness my hand and  
official seal at Sebring,  
Highlands County, Florida  
the day and year first  
above written.

Accepted and approved  
by the Board of County  
Commissioners of  
Bradford County Florida  
Date  
Chair

This is to certify that  
this is a correct  
Representation of the here-  
on described lands and  
subdivision thereof and  
that permanent monuments  
have been set as required  
by law and as shown  
on this plat  
Date 4/14/46

**DESCRIPTION**  
N 1/4 except two parcels on  
west side and except 11.4  
acres in SE corner, and  
all NE 1/4 of SW 1/4 except  
two parcels on east side  
owned by Hurtle and Dodd  
and two acres in SE  
corner of NW 1/4 of SW 1/4  
and South 1/2 of SW  
except one parcel on  
east side owned by  
Alderman  
Sec. 13, Town Ship 8 S.,  
Range 22 E, Bradford  
County, Florida.

Scale 1"=200'



Dedication  
 I do hereby certify that I am the owner in fee of the land described in the plat on and do hereby dedicate to the use of the public forever the streets as shown on this plat.

Witnesses

On this 14th day of April 1946 personally appeared Mrs. Jessie T. Stewart, Widow, to me well known and she acknowledged that she made the foregoing dedication to the purpose therein expressed. Witness my hand and official seal at Seville, Highlands County, Florida, the day and year first above written.

Commission Expires

Accepted and approved by the Board of County Commissioners of Bradford County Florida  
 Date

Not in use

This is to certify that this is a correct representation of the heretofore described lands and subdivision thereof and that permanent monuments have been set as required by law and as shown on this plat  
 Date April 19, 1946

DESCRIPTION  
 NW 1/4 except two parcels on west side, and except 11.4 acres in SE corner, and all NE 1/4 of SW 1/4 except two parcels on east side owned by Hurtle and Dill and two acres in SE corner of NW 1/4 of SW 1/4 and South 1/2 of SW 1/4 except one parcel on east side owned by Alderman  
 Sec. 13, Town Ship 8 S, Range 22 E, Bradford County, Florida.

Scale 1"=200'

Filed in the office of Clerk of Circuit Court, Bradford County, Florida, on 6th day of May, A.D. 1946, and recorded in Book 27 of Plats on page 30.  
 PUBLIC RECORDS OF BRADFORD COUNTY, Florida  
 Clerk of Circuit Court