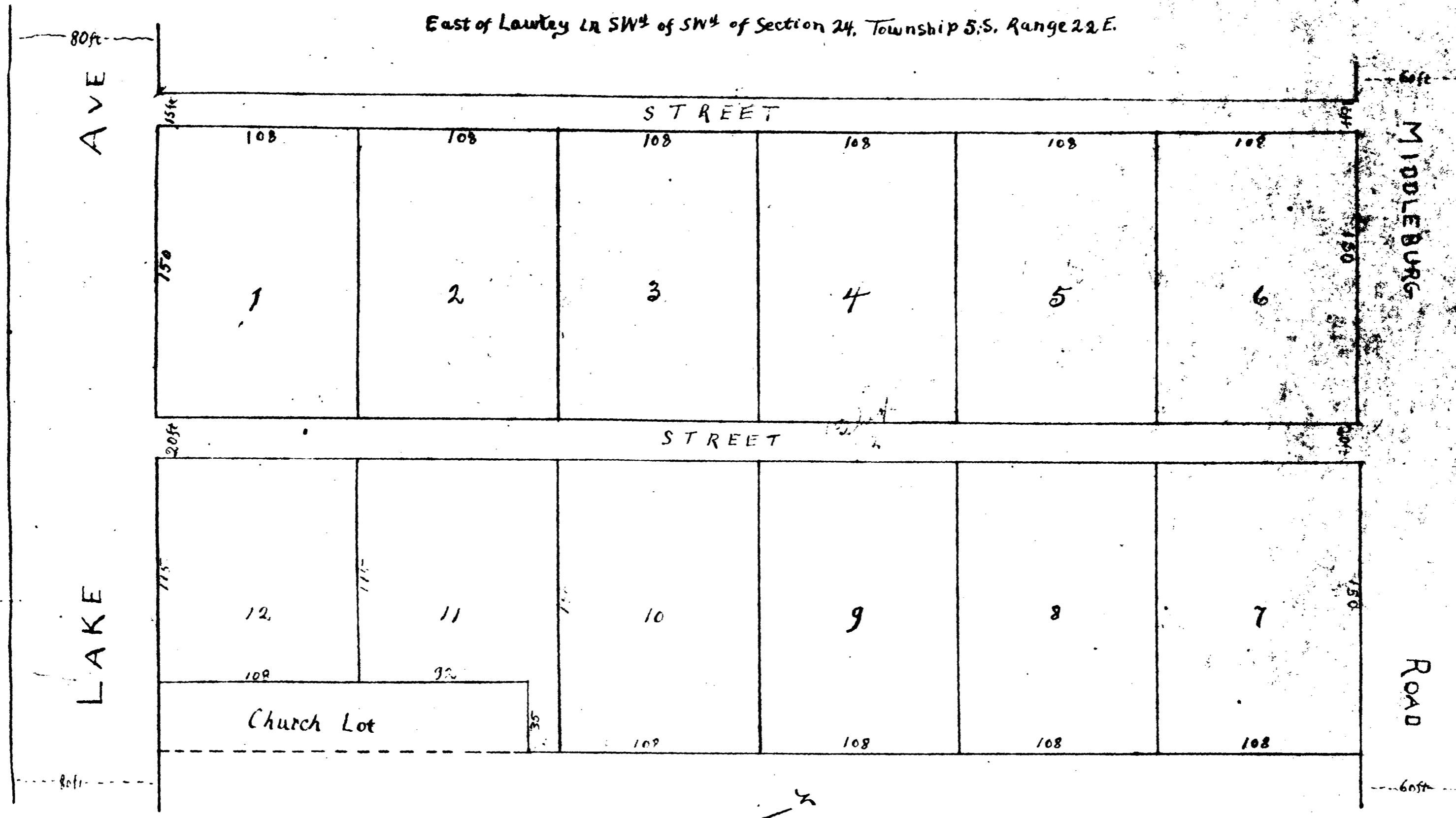


MATTISON SUBDIVISION OF BL 13

East of Lawley LA SW¹/₄ of SW¹/₄ of Section 24, Township 5.S. Range 22.E.



From centre of Seaboard track east along Lake Avenue to west side of 15 ft street is 2066 feet.

Scale, 1 inch 50 feet

Survey by H.E. Lagergren, April 1912.

Filed in the office of the Clerk of
 the Circuit Court for the County of
 Bradford, State of Florida on the
 23rd day of May A. D.
 1913. and recorded in Book
 # 1 of Maps on page 42,
 Public Records of said County.
 W. J. Weems

By *W. J. Weems*
 Clerk