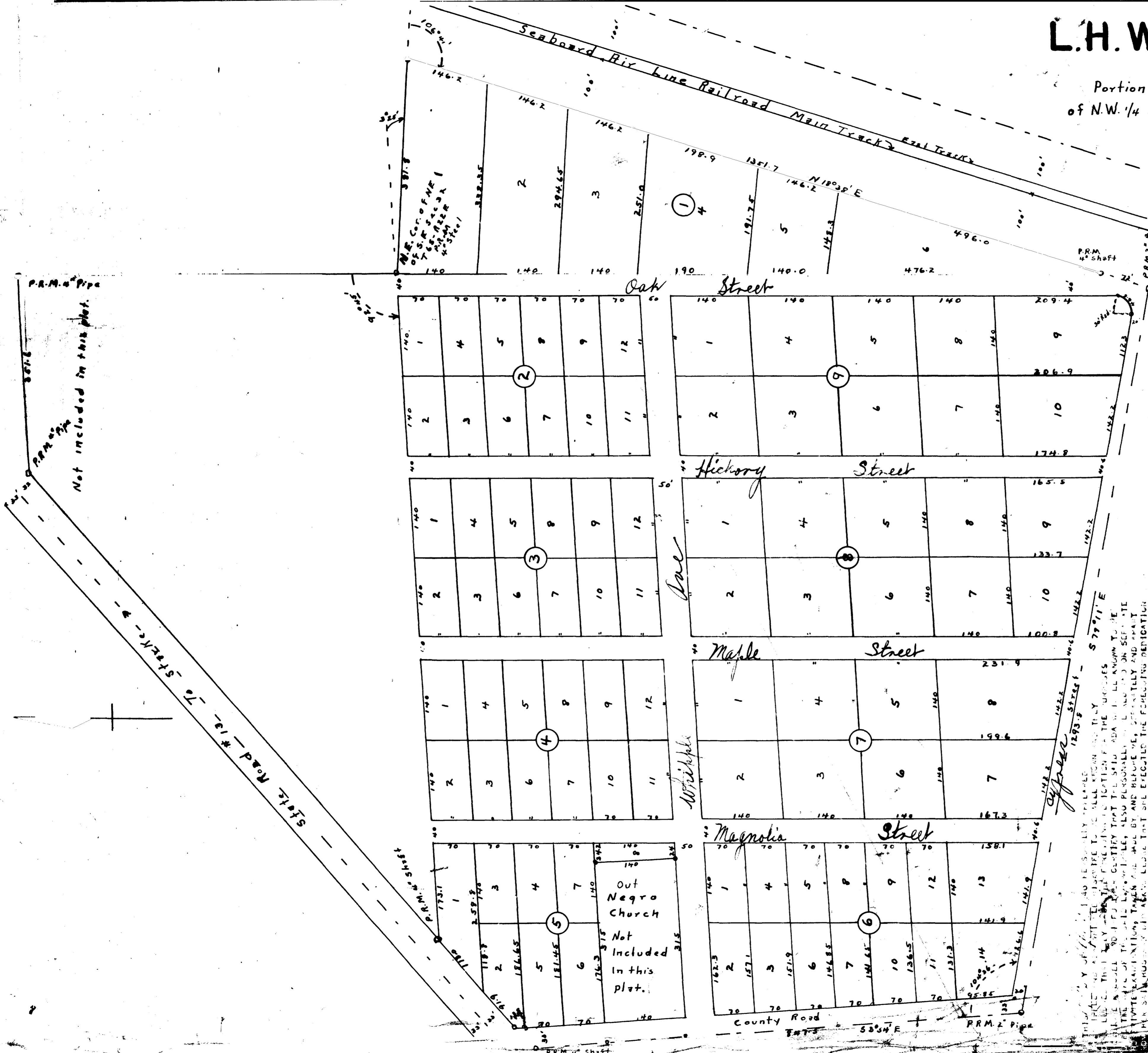


L.H. WHIPPLE SUB-DIV

Description
Portion of N.E. 1/4 of S.E. 1/4 Sec. 32 and portion
of N.W. 1/4 of S.W. 1/4 Sec. 33 T6S-R22E.



I, DO HEREBY CERTIFY THAT I AM THE OWNER IN
 FEE SIMPLE OF THE LAND DESCRIBED HEREIN AND I HEREBY
 DEDICATE TO THE USE OF THE PUBLIC FOREVER THE STREETS
 AS SHOWN ON THIS PLAT.

WITNESSES
Miss M. H. ...
Miss ...

THIS CERTIFICATE THAT THIS PLAT WAS PRESENTED TO THE BOARD OF
 COUNTY COMMISSIONERS OF BRADFORD COUNTY FLORIDA AND APPROVED
 BY THEM FOR RECORD ON THE 17th DAY OF 1946.

ATTEST
M. C. ...
 CLERK

THE COUNTY OF BRADFORD COUNTY FLORIDA DO HEREBY
 CERTIFY THAT THIS PLAT CONFORMS TO THE PROVISIONS OF FLORIDA STATUTES,
 CHAPTER 218, AS AMENDED, AND TO THE BEST OF MY BELIEF AND KNOWLEDGE IT
 IS CORRECT AND TRUE AND I HAVE SEEN THE ORIGINAL RECORD OF THIS PLAT
 IN THE PUBLIC RECORDS OF SAID COUNTY ON THE 17th DAY OF 1946.
 WITNESSES MY HAND AND SEAL THIS 17th DAY OF 1946.

TOTARY PUBLIC, MY COMMISSION EXPIRES
 ...

THE COUNTY OF BRADFORD COUNTY FLORIDA DO HEREBY
 CERTIFY THAT THIS PLAT CONFORMS TO THE PROVISIONS OF FLORIDA STATUTES,
 CHAPTER 218, AS AMENDED, AND TO THE BEST OF MY BELIEF AND KNOWLEDGE IT
 IS CORRECT AND TRUE AND I HAVE SEEN THE ORIGINAL RECORD OF THIS PLAT
 IN THE PUBLIC RECORDS OF SAID COUNTY ON THE 17th DAY OF 1946.
 WITNESSES MY HAND AND SEAL THIS 17th DAY OF 1946.

ATTEST
M. C. ...
 CLERK