

# "LAKEVIEW" SUBDIVISION

**DESCRIPTION:**

A Subdivision of the E. 1/2 of the NE. 1/4 of the NE. 1/4 of Sec. 13, TWP 8 South, Range 22 E., of Bradford Co., Florida.

**ADOPTION AND DEDICATION:**

We hereby certify that we are the lawful owners of the above described land and hereby dedicate to the use of the Public forever the Streets as shown on this Plat

WITNESS Wagon Christoff OWNER W.S. Sibley  
 WITNESS Wagon Christoff WIFE Virginia E. Sibley  
 WITNESS \_\_\_\_\_

**STATE OF FLORIDA  
COUNTY OF BRADFORD:**

I hereby Certify that on this day before me, an officer duly authorized to take acknowledgements in the State and in the County aforesaid personally appeared, W.S. Sibley and Virginia E. Sibley, his wife, to me well known to be the persons described in and who executed the foregoing instrument and acknowledge before me that they executed the same for the purposes thereon expressed.

Witness my hand and official seal this 4<sup>th</sup> Day of June 1956

Wagon Christoff Notary Public  
 My Commission expires: November 18, 1957

This is to certify that the accompanying plat is a true and correct representation of the land surveyed, platted, and described. That permanent reference monuments have been placed according to the laws of the State of Florida.

Signed this 2 Day of June 1956.

Wagon Christoff Surveyor.  
 FLA. CERT. NO. 770

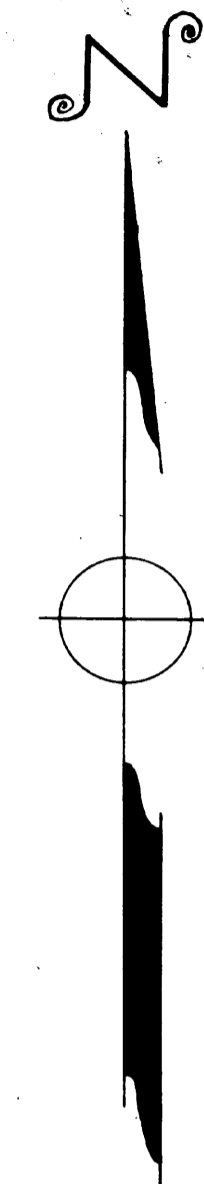
This is to certify that this plat has been examined and that it complies in form with Chapter No. 10275 of the laws of the State of Fla. of 1925, and is filed and recorded in Plat Book 2 Page 77 of Public Records of Bradford Co., Fla.

**APPROVED:**

(COUNTY SURVEYOR)

Approved by Board of County Commissioners of  
 Bradford County, Florida.

Charles R. Sarby  
 (CLERK)



1 INCH = 100 FEET

- = INDICATES IRON PIPE
- = " " " CONG. MON'S.

Elevation above Sea Level U.S. Geodetic Survey 120 Ft.

FOR RESTRICTIONS SEE:  
OR 83 PG 325

# "LAKEVIEW" SUBDIVISION

DESCRIPTION:  
A Subdivision of the E. 1/2 of the NE 1/4 of the NE 1/4 of  
Sec. 13, TWP 8 South, Range 22 E., of Bradford Co., Florida.

ADOPTION AND DEDICATION:  
We hereby certify that we are the lawful owners of the above  
described land and hereby dedicate to the use of the Public  
forever the Streets as shown on this Plat

WITNESS [Signature] OWNER W.S. Sibley  
WITNESS [Signature] WIFE Virginia L. Sibley  
WITNESS \_\_\_\_\_

STATE OF FLORIDA  
COUNTY OF BRADFORD:  
I hereby Certify that on this day before me, an officer  
duly authorized to take acknowledgements in the State and in the  
County aforesaid personally appeared, W.S. Sibley and Virginia L.  
Sibley, his wife, to me well known to be the persons described in  
and who executed the foregoing instrument and acknowledge before  
me that they executed the same for the purposes thereon expressed.

Witness my hand and official seal this 4<sup>th</sup> Day of June 1956  
[Signature] Notary Public  
My Commission expires: November 18, 1957

This is to certify that the accompanying plat is a true and  
correct representation of the land surveyed, platted, and described.  
That permanent reference monuments have been placed according  
to the laws of the State of Florida.

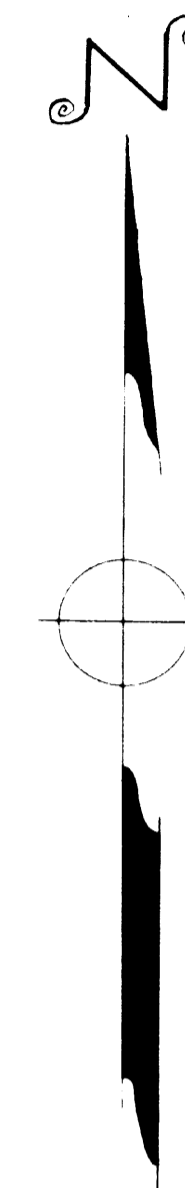
Signed this 2 Day of June 1956.  
\_\_\_\_\_  
FLA. CERT. NO. 770  
Surveyor

This is to certify that this plat has been examined and that  
it complies in form with Chapter No. 10275 of the laws of the State of  
Fla of 1925, and is filed and recorded in Plat Book 2  
Page 77 of Public Records of Bradford Co., Fla.

APPROVED:  
\_\_\_\_\_  
(COUNTY SURVEYOR)

Approved by Board of County Commissioners of  
Bradford County, Florida.

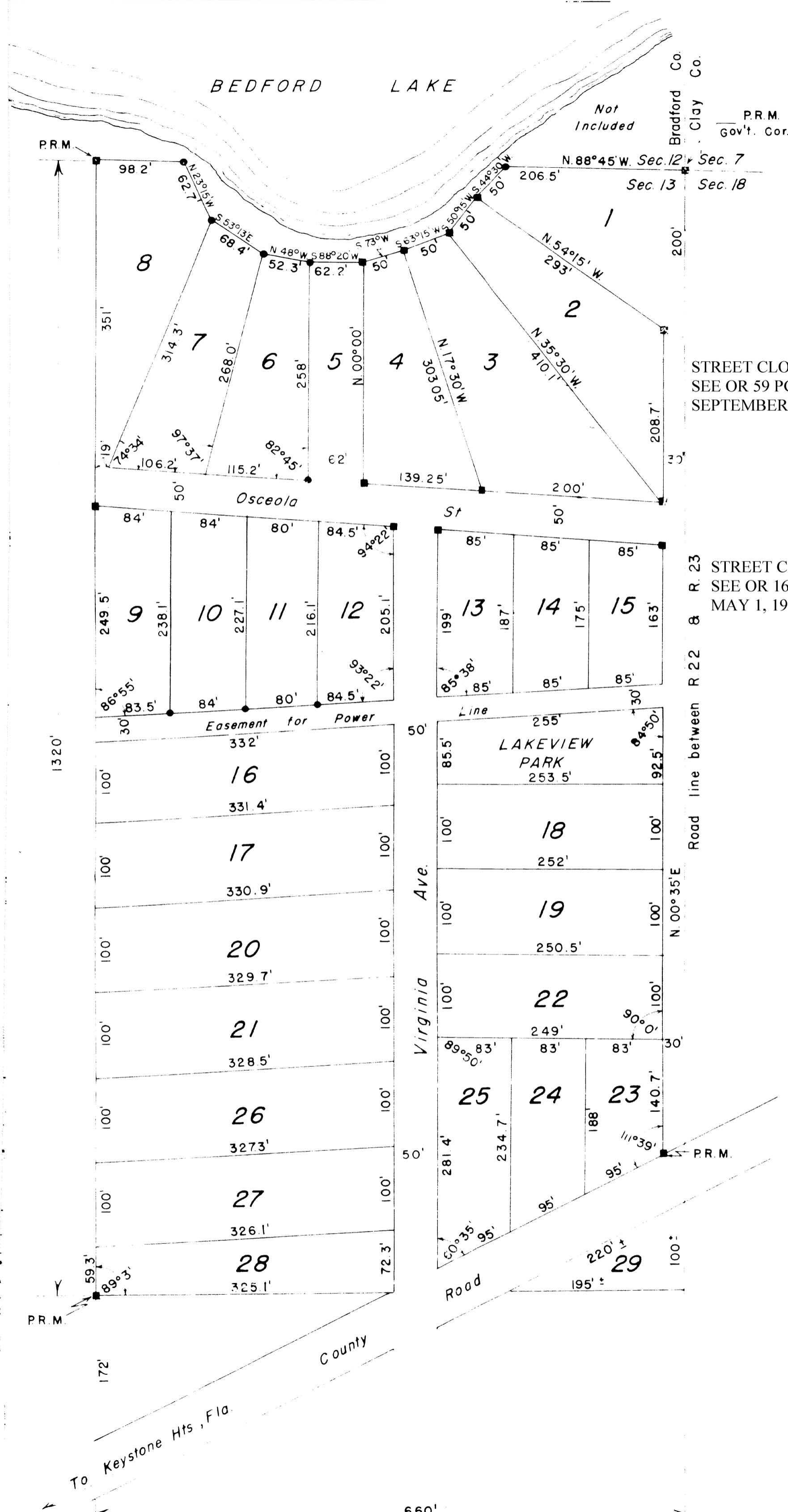
\_\_\_\_\_  
(CHAIRMAN)  
Charles A. Sany  
(CLERK)



1 INCH = 100 FEET

● = INDICATES IRON PIPE  
■ = " " CONG. MON'S

Elevation above Sea Level U.S. Geodetic  
Survey 120 Ft.



STREET CLOSED BY COUNTY COMMISSIONERS  
SEE OR 59 PG 411  
SEPTEMBER 21, 1966

STREET CLOSED BY COUNTY COMMISSIONERS  
SEE OR 161 PG 135-136  
MAY 1, 1978