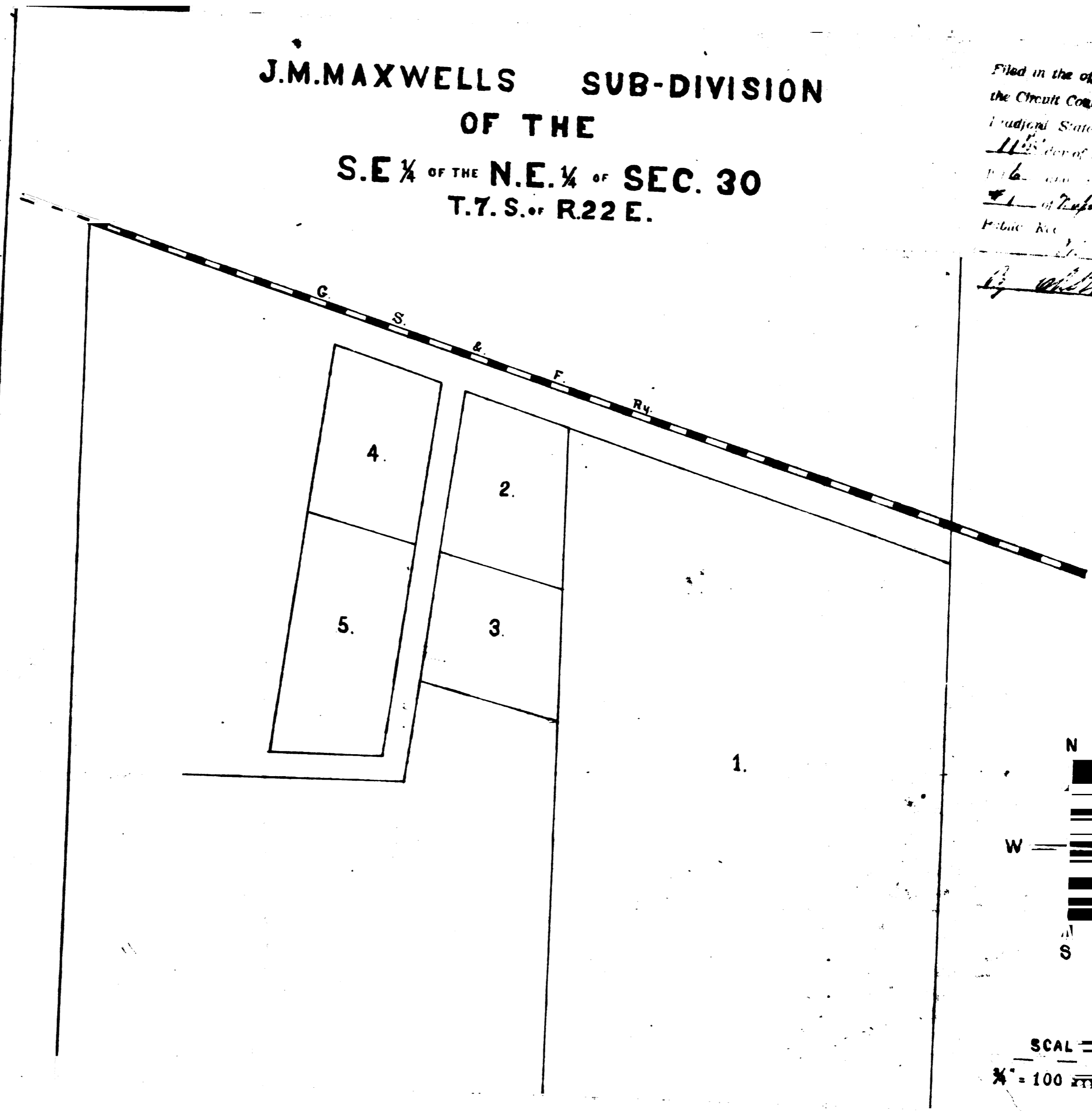
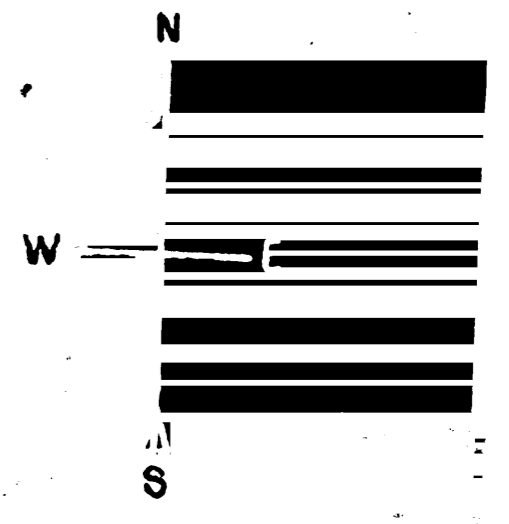


**J.M. MAXWELLS SUB-DIVISION
OF THE
S.E. 1/4 OF THE N.E. 1/4 OF SEC. 30
T.7. S. OF R.22 E.**



Filed in the office of the Clerk of
the Circuit Court for the County of
Madison State of Florida on the
11th day of ~~November~~ October A. D.
1916
Public Rec. of said County,
Clerk.
By William J. West
C. M. Clerk.



SCALE
1" = 100 FT.

W. J. West
Oct 5th 1916