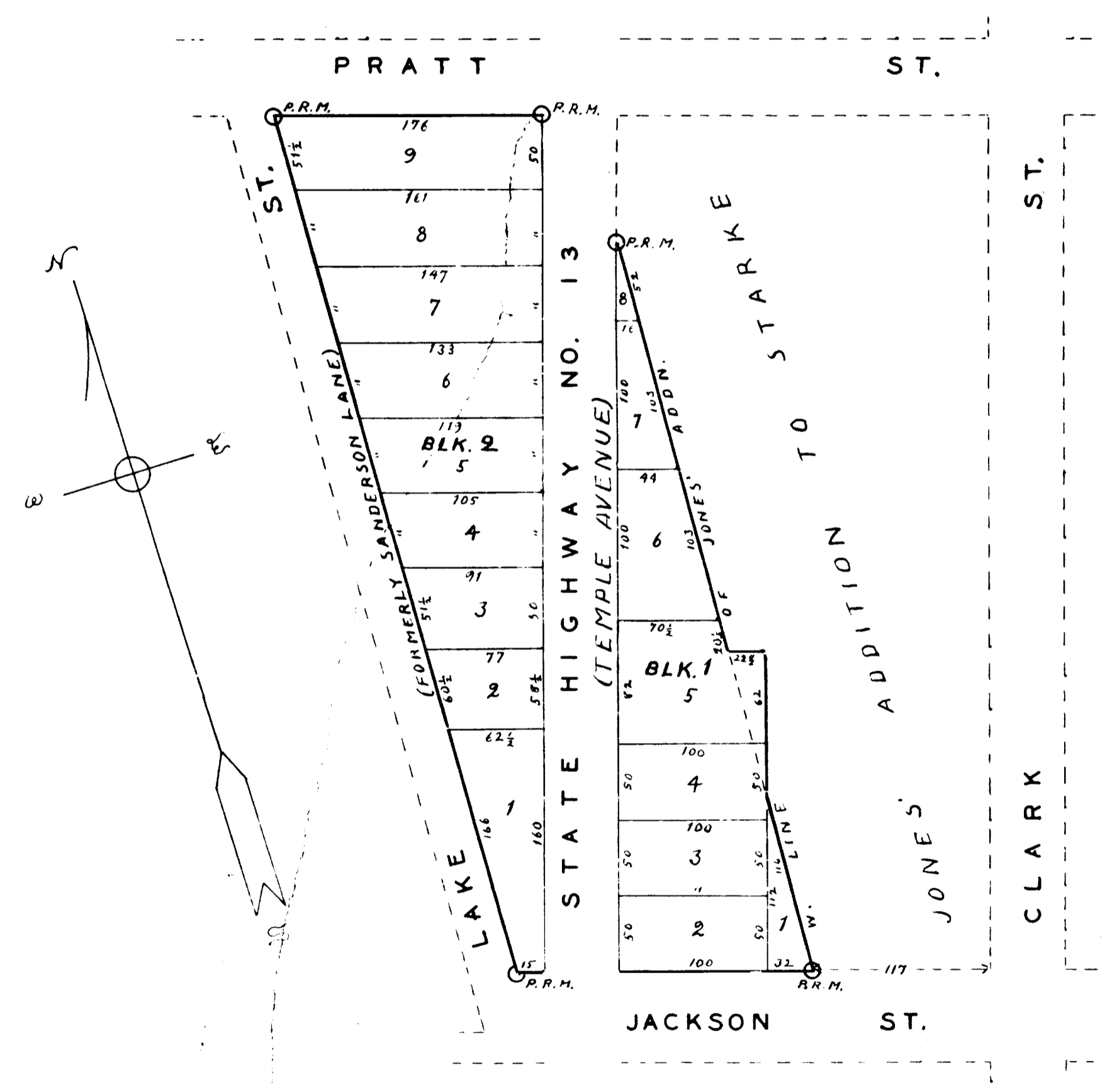


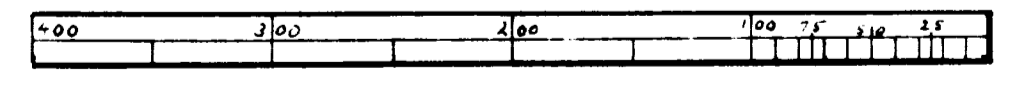
Dedication

Highway Addition to Starke

Situated in Section 28, Tp. 6 S., Range 22 E., in Starke, Bradford County, Florida; bounded north by Pratt St., south by Jackson St., east by Jones' Addition to Starke and west by Lake St., or Sanderson Lane.



SCALE: 1 1/4 INCH = 100 FT.



I hereby certify that I have surveyed this tract; that I have placed legal monuments at the points indicated, and that the courses and distances as given are correct, to my best knowledge and belief.
Starke, Fla., June 24, 1927.
H. E. Lagergren.

We, Mary O. Wainwright and husband, N. D. Wainwright, are the sole owners of HIGHWAY ADDITION TO STARKE, described as follows, to-wit: Situated in Section 28, Township 6 S., Range 22 E., in Starke, Bradford County, Florida; bounded north by Pratt St., south by Jackson St., east by Jones' Addition to Starke, and west by Lake St., or Sanderson Lane, as shown on annexed plat; and we do hereby dedicate to the use of the public forever the streets platted thereon.

Signed in presence of:

Mary O. Wainwright [SEAL]
N. D. Wainwright [SEAL]

[Signature]
A. W. Williams

STATE OF FLORIDA
BRADFORD COUNTY

On this 27 day of July, 1927, personally appeared Mary O. Wainwright and N. D. Wainwright, her husband, to me well known, and they acknowledged that they made the foregoing dedication for the purpose therein expressed.

WITNESS MY HAND and official seal at Starke, Bradford County, Florida, the day and year first above written.
My commission expires July, 1927.

[Signature]
Notary Public.



APPROVED:

Louis H. Still
Chm. County Commrs, Bradford Co.

ATTEST:

G. W. [Signature]
County Clerk

APPROVED:

[Signature]
City Council, Starke, Florida

ATTEST:

[Signature]
City Clerk