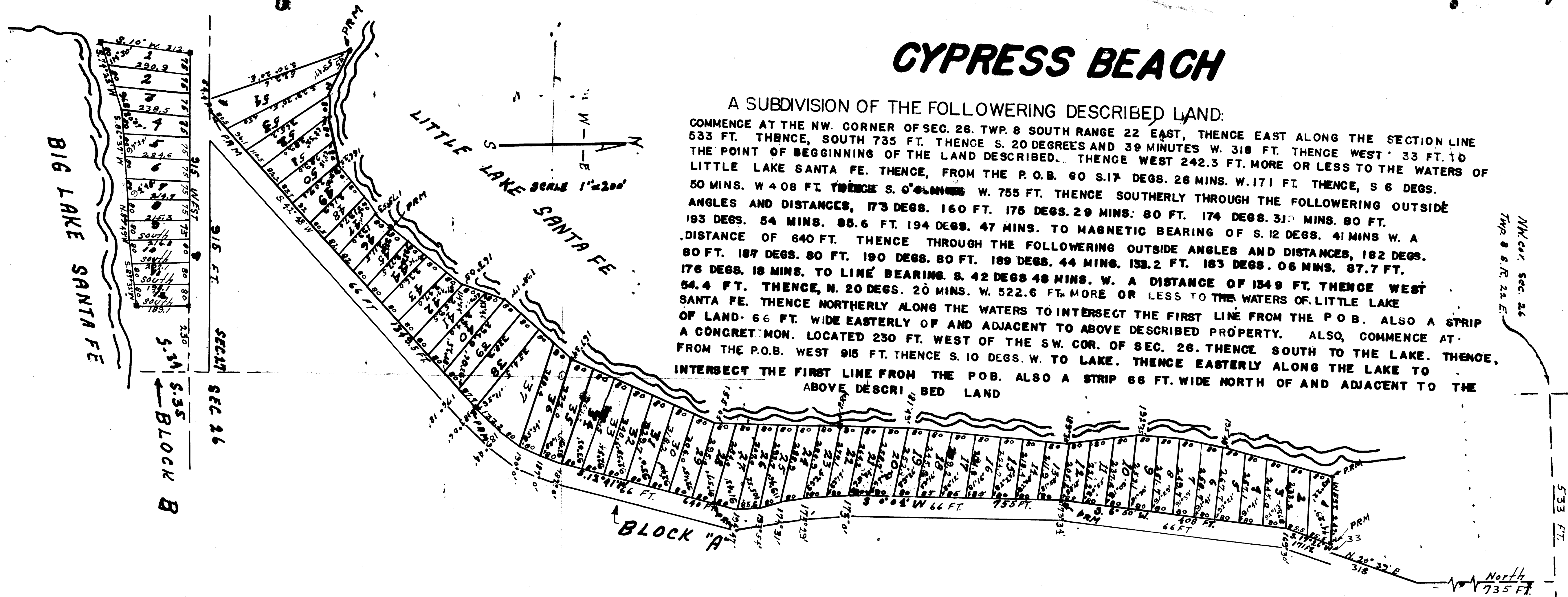


CYPRESS BEACH

A SUBDIVISION OF THE FOLLOWING DESCRIBED LAND:

COMMENCE AT THE NW. CORNER OF SEC. 26. TWP. 8 SOUTH RANGE 22 EAST, THENCE EAST ALONG THE SECTION LINE 533 FT. THENCE, SOUTH 735 FT. THENCE S. 20 DEGREES AND 39 MINUTES W. 318 FT. THENCE WEST 33 FT. TO THE POINT OF BEGINNING OF THE LAND DESCRIBED. THENCE WEST 242.3 FT. MORE OR LESS TO THE WATERS OF LITTLE LAKE SANTA FE. THENCE, FROM THE P.O.B. 60 S. 17 DEGS. 26 MINS. W. 171 FT. THENCE, S 6 DEGS. 50 MINS. W 408 FT. THENCE S. 0° 41 MINS. W. 755 FT. THENCE SOUTHERLY THROUGH THE FOLLOWING OUTSIDE ANGLES AND DISTANCES, 173 DEGS. 160 FT. 175 DEGS. 29 MINS. 80 FT. 174 DEGS. 31 MINS. 80 FT. 193 DEGS. 54 MINS. 85.6 FT. 194 DEGS. 47 MINS. TO MAGNETIC BEARING OF S. 12 DEGS. 41 MINS W. A DISTANCE OF 640 FT. THENCE THROUGH THE FOLLOWING OUTSIDE ANGLES AND DISTANCES, 182 DEGS. 80 FT. 187 DEGS. 80 FT. 190 DEGS. 80 FT. 189 DEGS. 44 MINS. 132.2 FT. 183 DEGS. 06 MINS. 87.7 FT. 176 DEGS. 18 MINS. TO LINE BEARING S. 42 DEGS 48 MINS. W. A DISTANCE OF 1349 FT. THENCE WEST 54.4 FT. THENCE, N. 20 DEGS. 20 MINS. W. 522.6 FT. MORE OR LESS TO THE WATERS OF LITTLE LAKE SANTA FE. THENCE NORTHERLY ALONG THE WATERS TO INTERSECT THE FIRST LINE FROM THE P.O.B. ALSO A STRIP OF LAND 66 FT. WIDE EASTERLY OF AND ADJACENT TO ABOVE DESCRIBED PROPERTY. ALSO, COMMENCE AT FROM THE P.O.B. WEST 915 FT. THENCE S. 10 DEGS. W. TO LAKE. THENCE EASTERLY ALONG THE LAKE TO INTERSECT THE FIRST LINE FROM THE P.O.B. ALSO A STRIP 66 FT. WIDE NORTH OF AND ADJACENT TO THE ABOVE DESCRIBED LAND



N.W. cor. Sec. 26
Twp. 8 S. R. 22 E.

533 FT.

North
735 FT.

ADOPTION AND DEDICATION

WE HEREBY CERTIFY THAT WE ARE LAWFUL OWNERS OF THE PROPERTY DESCRIBED AND HEREBY DEDICATE TO THE USE OF THE PUBLIC FOREVER THE STREETS AS SHOWN ON THIS PLAT

WITNES
Roy L. Watkins
A. J. Thomas
Guy Andrews
Elizabeth S. Andrews

STATE OF FLORIDA COUNTY OF BRADFORD.

I HEREBY CERTIFY THAT ON THIS DAY BEFORE ME, AN OFFICER, DULY AUTHORIZED TO TAKE ACKNOWLEDGMENTS IN THE STATE AND IN THE CO. AFORESAID PERSONALLY APPEARED GUY ANDREWS AND ELIZABETH S. ANDREWS, HIS WIFE, TO ME WELL KNOWN TO BE THE PERSONS DESCRIBED IN AND WHO EXECUTED THE FOREGOING INSTRUMENT AND ACKNOWLEDGED BEFORE ME THAT THEY EXECUTED IT FOR THE PURPOSE THEREON EXPRESSED.

WITNESS MY HAND AND SEAL THIS 21 DAY OF Jan. 1957
 NOTARY Public STATE FLA
 AT LARGE
A. J. Thomas
 MY COMMISSION EXPIRES
 Sept. 27, 1967

THIS IS TO CERTIFY THAT THE ACCOMPLYING PLAT IS A TRUE AND CORRECT REPRESENTATION OF THE LAND SURVEYED AND PLATTED HERE ON AND THAT P.R.M.'S HAVE BEEN AT POINTS SO MARKED.

Roy L. Watkins
 P.R.M. CERT. NO. 710

I HEREBY CERTIFY THAT THIS PLAT HAS BEEN EXAMINED AND THAT IT COMPLIES IN FORM WITH CHAPTER NO. 10275. LAWS OF THE STATE OF FLORIDA OF 1925 AND IS FILED FOR RECORD IN BRADFORD CO. FLA. THIS 21 DAY OF Jan. 1957.

Charles A. Farley - CLERK

I HEREBY APPROVE THIS PLAT FOR RECORD IN BRADFORD CO. FLA.

W. A. Bishop, Jr.
 CHAIRMAN OF BOARD OF CO.
 COMMISSIONERS

For Release of Restrictions see OR Book 113 Page 281
 Donna M. Dugan, Deed (24 24130)

For restrictions see Deed Book 85 Page 94

For deletion of a part of covenants see OR #11 Page 522 this May 6, 2 & 1960 (Lots 142)