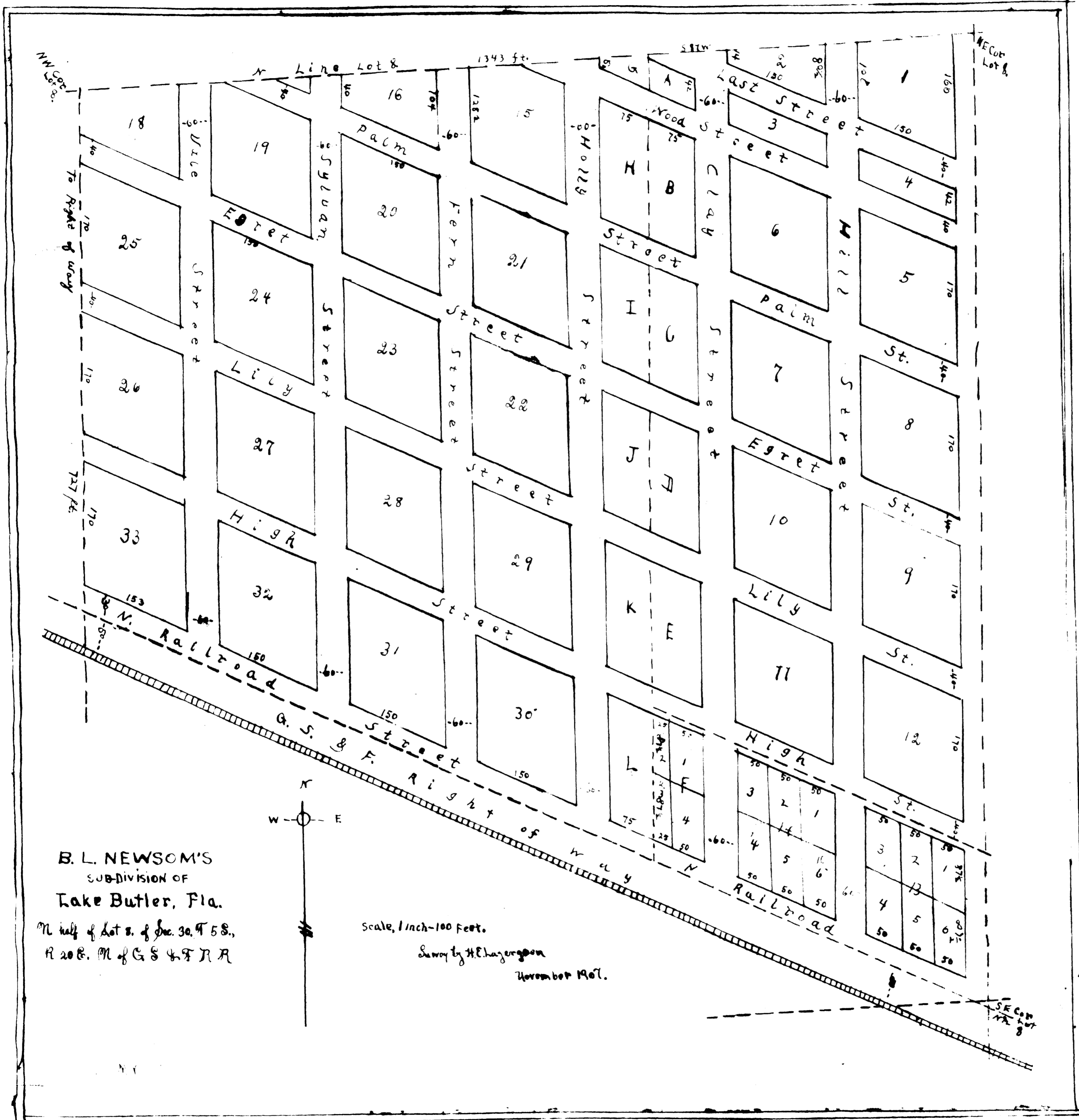


State of Florida }
 County of Bradford } Filed in the
 office of the Clerk Circuit Court
 aforesaid State and County, and
 recorded in Book of Maps on
 page 22. Public records of
 said County.
 This 26th day of February
 AD 1908.

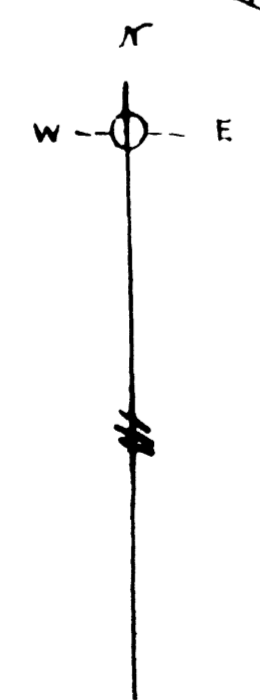
W.D. Whelan Clerk

By _____



B. L. NEWSOM'S
 SUB-DIVISION OF
 Lake Butler, Fla.

M. half of Lot 2. of Sec. 30. T 5 S.,
 R 20 E. M of G S & F R R



Scale, 1 inch = 100 Feet.
 Survey by H. E. Lagerstrom
 November 1907.

SEC. 30
 T 5 S.
 R 20 E.